

Plastic Drain / Trunking



PLASTIC DRAIN

Sizes Available

3/4" - (22mm)

1 1/4" - (32mm)

1 1/2" - (38mm)

3mtr Lengths

90° Bends

45° Bends

Straight Connectors

Tees

38m - 32m Reducers

32m - 22m Reducers

Solvent Weld

PLASTIC TRUNKING



DUCTS

Size in mm

A	B
70	65
105	75

Prod. Code

D-70
D-105



90° FLAT BEND

Size in mm

A	B	C
115	115	70.4
150	150	105.4

Prod. Code

FB-70
FB-105



CONNECTION PIECE

Size in mm

A	B	C
75.4	70.4	70.4
110.4	80.4	105.4

Prod. Code

CP-70
CP-105



FLAT ROSETTE

Size in mm

A	B	C
115.4	90	70.4
150.4	100	105.4

Prod. Code

FR-70
FR-105



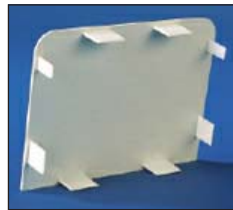
DUCT END

Size in mm

A	B	C
120	45	70.4
120	50	105.4

Prod. Code

DE-70
DE-105



DUCT CAP

Size in mm

A	B	C
70	65	2
105	75	2

Prod. Code

DC-70
DC-105



90° ELBOW BEND

Size in mm

A	B	C
95	95	70.4
110	110	105.4

Prod. Code

EB-70
EB-105



45° FLAT BEND

Size in mm

A	B	C
92.58	145.5	70.4
92.58	170.3	105.4

Prod. Code

FB-70.45
FB-105.45



ELBOW EXTERNAL 90°

Size in mm

A	B	C
95	95	70.4
110	110	105.4

Prod. Code

EIN-70
EIN-105



CORNER CAP

Size in mm

A	B	C	D	E
67	65	66	105	110
84	70	66	124	125
109	76	66	149	140

Prod. Code

NA-60
NA-75
NA-100

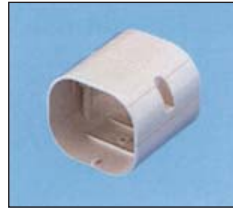
Plastic Trunking

INOAC TRUNKING



STRAIGHT DUCT

Size in mm			Prod. Code
A	B	C	
57.5	58	2000	CD-60
74	62	2000	CD-75
99	68	2000	CD-100
138	78	2000	CD-140



SOCKET

Size in mm			Prod. Code
A	B	C	
65.5	65	80	NS-60
82	69	80	NS-75
107	75	80	NS-100
146	85	80	NS-140



ELBOW (VERTICAL)

Size in mm			Prod. Code
A	B	C	
65.5	65	120	NC-60
82	69	124	NC-75
107	75	135	NC-100
146	85	149	NC-140



T-JOINT

Size in mm					Prod. Code
A	B	C	D	E	
107	75	161	215	35	NT-100
80	70	120	160	-	NT-75



ELBOW (HORIZONTAL)

Size in mm			Prod. Code
A	B	C	
65.5	65	119.5	NE-60
82	69	141	NE-75
107	75	161	NE-100
146	85	200	NE-140



45° ELBOW VERTICAL

Size in mm			Prod. Code
A	B	C	
65.5	65	67	U-60
82	69	72	U-75
107	75	83	U-100



FLEXIBLE JOINT

Size in mm				Prod. Code
A	B	C	D	
59.5	60	60	550	NF-60
76	64	60	550	NF-75
101	70	75	800	NF-100
140	80	80	1000	NF-140



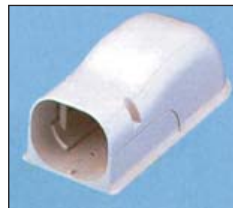
SADDLE BAND

Size in mm	Prod. Code
360	NV-L



WALL CAP

Size in mm				Prod. Code
A	B	C	D	
110	110	16	40	K-60
126	114	16	40	K-75
175	145	16	40	K-100



OUTLET COVER

Size in mm					Prod. Code
A	B	C	D	E	
65.5	65	200	77	81	NW-60
82	69	210	94	93	NW-75
107	75	231	119	96	NW-100
146	85	286	158	105	NW-140



45° ELBOW HORIZONTAL

Size in mm			Prod. Code
A	B	C	
65.5	65	68	NM-60
82	69	74	NM-75
107	75	84	NM-100



UNIVERSAL ELBOW (Horizontal)

Size in mm			Prod. Code
A	B	C	
65.5	65	136.8	NX-60
82	69	153	NX-75
107	75	193.5	NX-100
146	85	248	NX-140



END SOCKET

Size in mm					Prod. Code
A	B	C	D	E	
53	30	99	65.5	65	NR-60
53	30	99	82	69	NR-75
53	30	115	107	75	NR-100



UNIVERSAL ELBOW (Horizontal)

Size in mm			Prod. Code
A	B	C	
65.5	65	117.5	NZ-60
86	69	122.5	NZ-75